

Parks on the Air (POTA) outing is planned at Batsto Village, NJ

- US-5000 Wharton State Forest
- US-6609 Pinelands Preserve National Conservation Area

Calling all amateur radio enthusiasts and members of the Burlington County Radio Club (K2TD)! Join us for an exciting POTA outing at Batsto Village, New Jersey. It's a fantastic opportunity to engage in portable radio operations in one of NJ's most scenic locations.

Event Details:

Location: Batsto Village, NJ

Date: Saturday April 13th 2024

Time: Arrive at 10:00AM

Meeting Point: Main Parking Lot

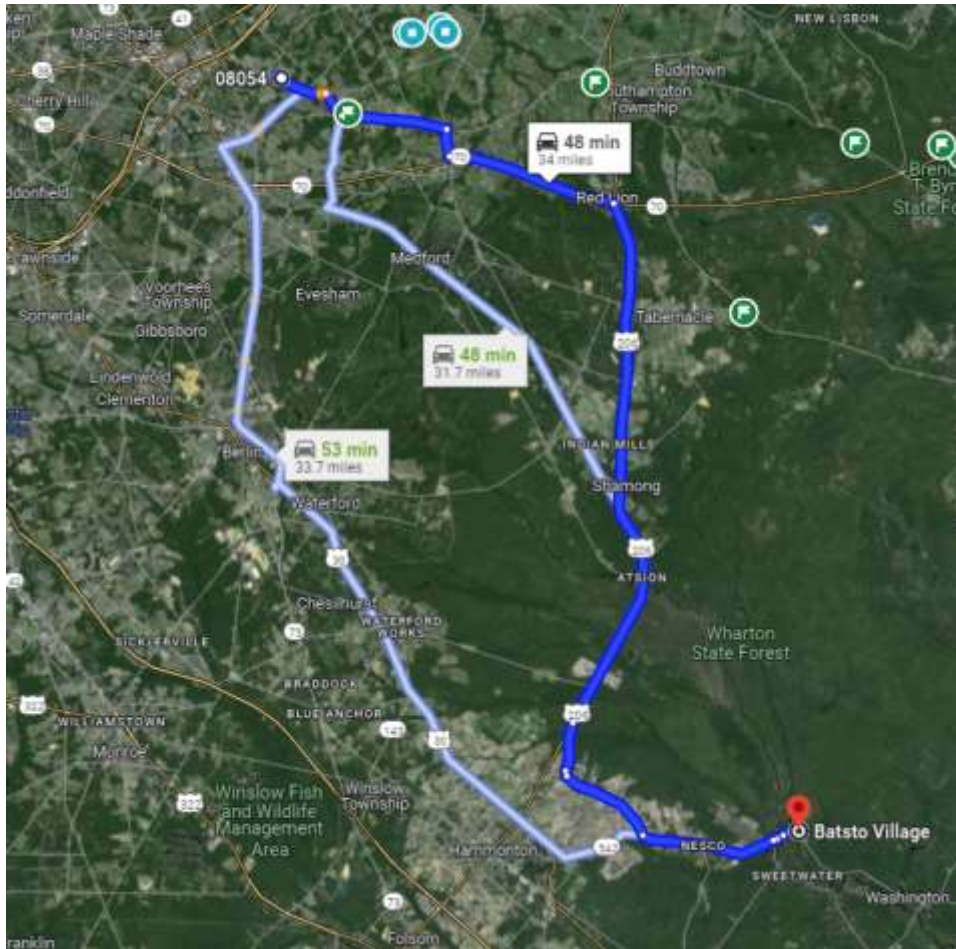
There is no entry fee

Please bring:

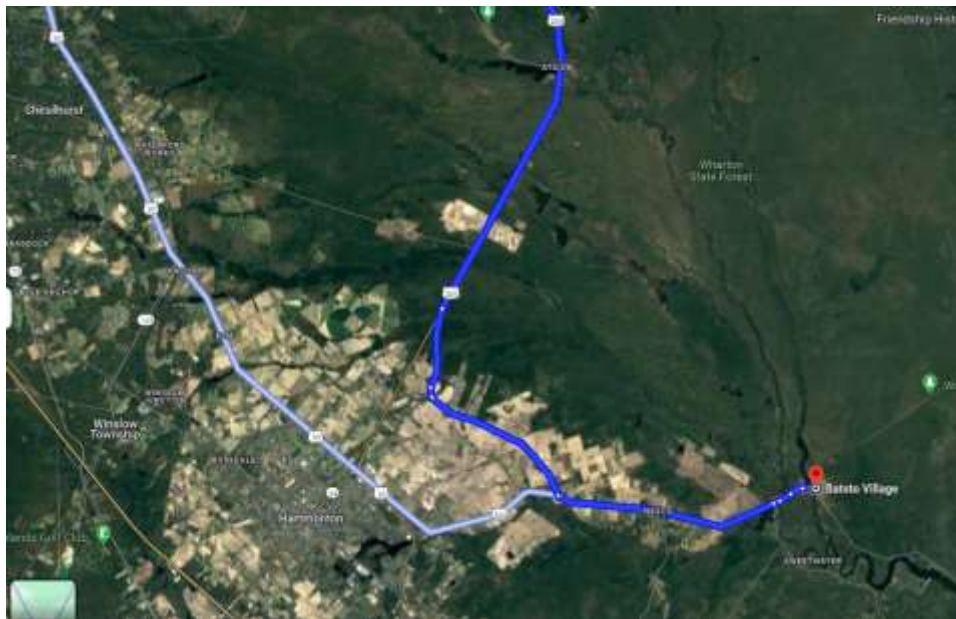
- Your portable radio equipment & antennas
- A table & chairs to operate from
- Any other gear you might need
- Dress appropriately for the weather
- Plenty of water and either a lunch or snacks

Directions:

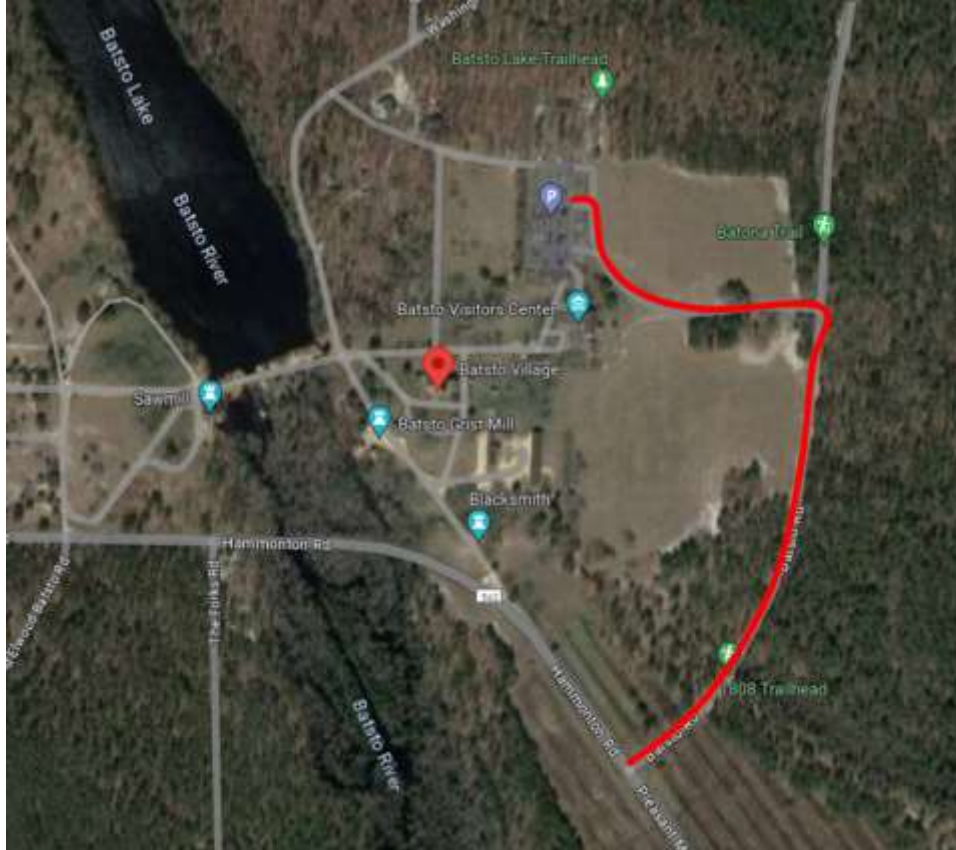
See the map to Batsto below:



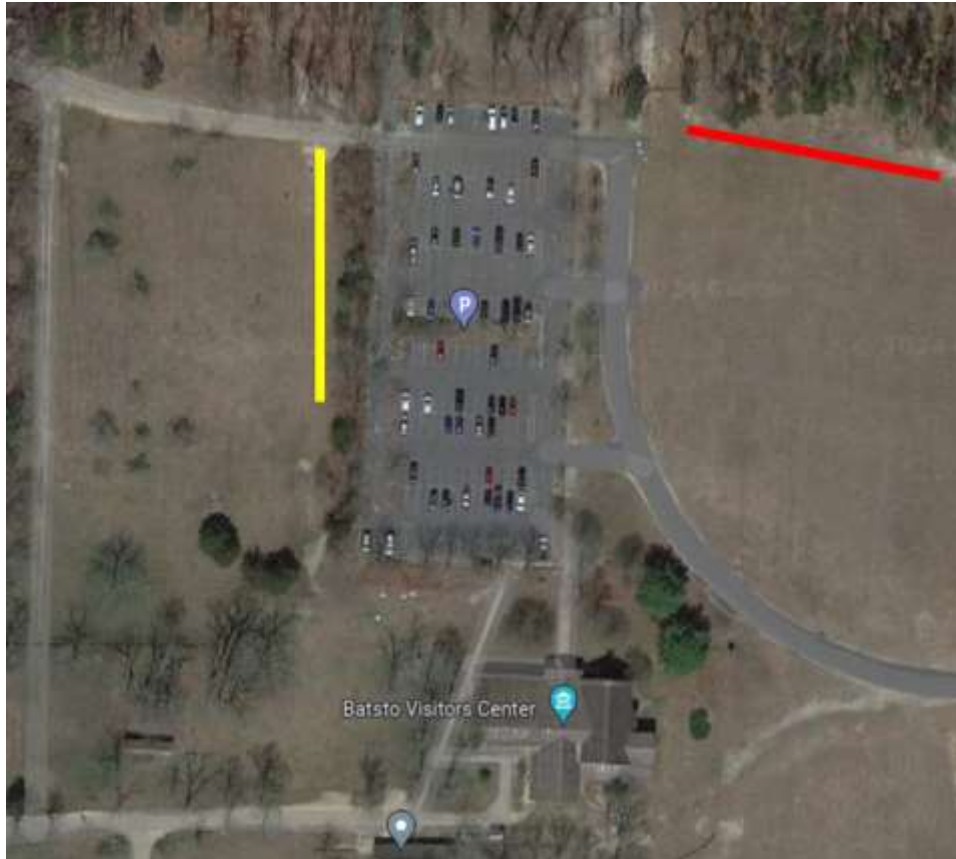
Here's a little closer view of the map:



And here's a close-up of the location. Google will try to take you through a closed gate. Follow the red path on the diagram below to get to the parking lot:



When you park consider the following:
I intend to set up on the yellow line on the diagram below. If that doesn't look good for whatever reason the alternate location is in the red line below.



Batsto is not listed as a POTA park, but it is in both Wharton and Pinelands. (See maps Below) My plan is to activate both parks.

US-5000 Wharton State Forest

WHARTON State Forest



US-6609 Pinelands Preserve National Conservation Area

